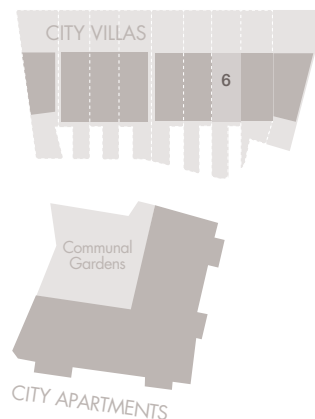
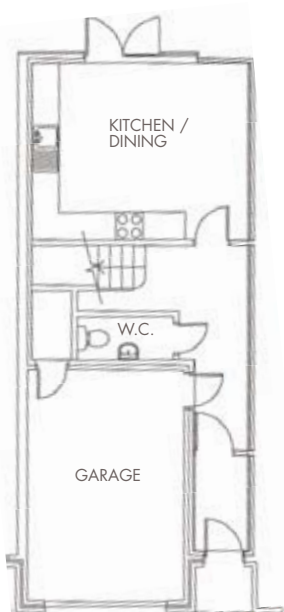


CITY VILLAS



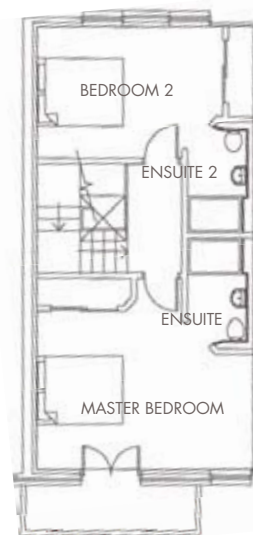
VILLA 6



GROUND

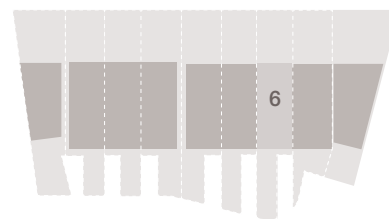


FIRST



SECOND

		Metres	Feet / Inches
Ground	Kitchen / Dining	4.2 x 3.9	13'9" x 12'4"
	W.C.	1.9 x 1.0	6'2" x 3'3"
	Garage	5.0 x 3.4	16'5" x 11'1"
First	Living Area	4.8 x 4.2	15'6" x 13'9"
	Bedroom 3	4.8 x 2.9	15'6" x 9'6"
	Bathroom	2.6 x 1.4	8'6" x 4'7"
Second	Master Bedroom	4.8 x 4.1	15'6" x 13'5"
	Ensuite	1.9 x 1.8	6'2" x 5'11"
	Bedroom 2	4.1 x 2.9	13'5" x 9'6"
	Ensuite 2	1.5 x 1.3	9'10" x 4'3"



Treetops Development Company limited gives notice that: (1) the specification and materials may vary from those shown; (2) all descriptions, dimensions, references to condition and necessary permissions for use and occupation, and other details are given without responsibility and any intending purchasers should not rely upon them as statements or representations of fact but must satisfy themselves by inspection or otherwise as to the correctness of each of them and are advised to do so; (3) all visuals shown are for illustrative purposes only; (4) although every care has been taken to ensure the accuracy of all information, contents do not form part nor shall be deemed to form part of, or constitute, a representation warranty, or part of any contract.